

UTP-T2

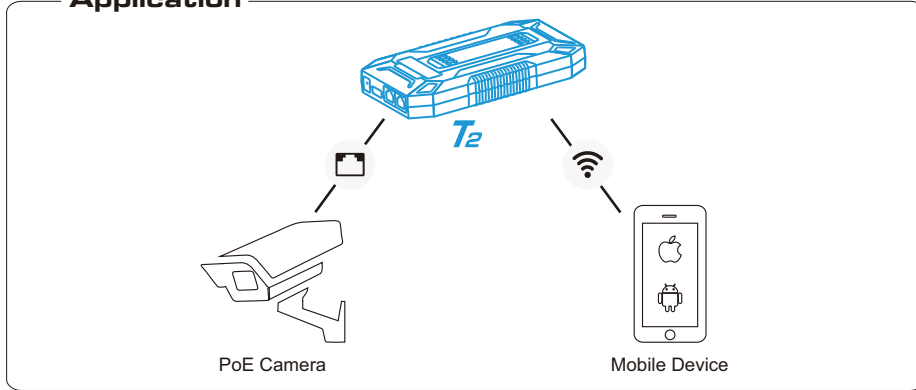
EPFast Tool

User Manual

13.238.101.1852
Ver.1.0

UTP-T2 EPFast Tool is a professional network engineering tool with built-in 4500mAh battery, which could supply power to devices such as cameras and mobile phones. The product supports PoE, PoE diagnosis, and powerful IPC management. After connected its WIFI, you can quickly diagnose the network, install and deploy the cameras through the mobile APP. In addition, it is the ideal tools to provide a professional, simple, visual, safe and convenient network engineering tool for the majority of engineering and network operation and maintenance personnel.

Application



Highlights

1. Strong power supply capacity

With the built-in 4500mAh battery, the EPFast Tool is able to supply power to camera that whose the power is less than 30W. Under full power condition, it sustains supplying power in 0.5hours or 2 hours for debugging the 30W or 10W camera.

Fast charge function: With the default 12V power adapter, you can fully charge your EPFast Tool in around 3 hours.

2. Power supply and diagnosis

The EPFast Tool supports PoE at the standard of IEEE802.3af/at and DC 12V/2A power, which is convenient for the deployment and debugging for IPC and AP.

The EPFast Tool can detect whether the power supply is normal as well as its mode, with which you can quickly find the abnormal in PoE and PoE line sequence, and diagnose and optimize the power supply mechanism for existing terminals.

3. IPC management

Real-time monitoring and management of IPC which supports Onvif Protocol;

Automatic recognition of the camera;

Angle adjustment;

Channel name configuration;

monitoring screenshot;

Debugging configuration;

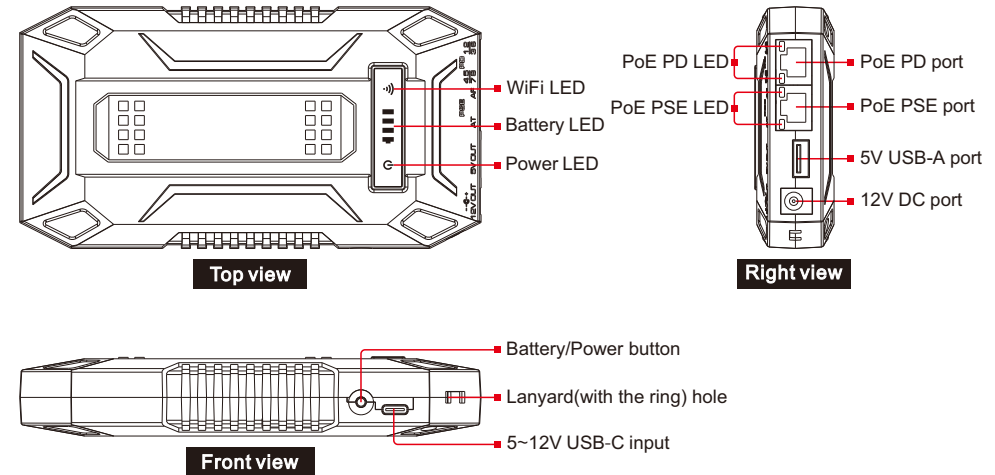
4. WiFi transmission

It is recommended max 6 terminal devices to access the EPFast Tool at the same time within the distance of 30 meters. And it is compatible with Apple, Huawei and other major brand devices (smartphone, iPad).

5. Network diagnosis

Network link diagnosis: It can support real-time ping and other tools to diagnose the network connection, including connectivity status, delay and packet loss of the network link, and quickly locate network faults.

Board Diagram



Light status

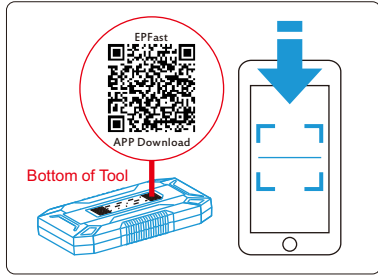
LED		ON	OFF	Flash
PoE PD	1 2/3 6	End-span Non-standard PoE	No PoE	End-span standard PoE
	4 5/7 8	Mid-span Non-standard PoE	No PoE	Mid-span standard PoE
PoE PSE	AF	AF mode	No output	AF mode overload
	AT	AT mode	No output	AT mode overload
WiFi	WiFi icon	WiFi / Network function on	WiFi / Network function off	WiFi / Network with data transmission
Battery	Battery icon	Remaining battery		Charging state
Power	Power icon	System on	System off	

Installation steps

Please check the following items before installation. If any missing, please contact the dealer.

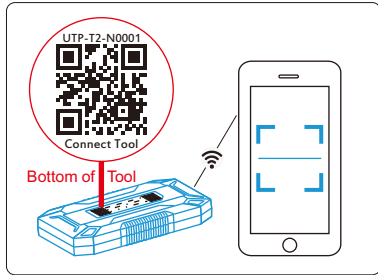
- EPFast Tool 1pc
- Manual 1pc
- Type-c cable 1pc
- DC power cord 1pc
- 100-240V to 12V power adapter 1pc
- Pendant 1pc

■ Installation Guide



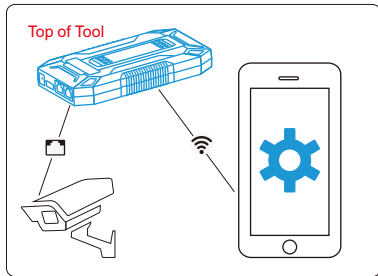
1、APP:Download APP

- ① Scan the code in right side on bottom to download APP.
- ② Press the right-handed button for 5 seconds to start up, the LED indicator is turn on and EPFast Tool starts to work.



2、Connect to EPFast Tool(UTP-T2)

- ① Automatic:
Scan the code in left side on bottom of the EPFast Tool through APP to connect.
- ② Manual:
Search SSID of UTP-T2-XXXX in wifi of smartphone, and click to connect.



3、Connect to IP Camera through APP

- ① Connect IP camera to RJ45 port of EPFast Tool through cable.
- ② The APP would automatically search the original IP address of IP camera according to its brand, then you can click “connect” and input the related account/password to login. After login, you can modify the angel of view & name of IP camera, as well as the function of quick preview & screenshots.

■ Specification

Features		Characteristic
Model		UTP-T2
Power Output	PSE port	DC 54V/30W (max) Support IEEE802.3af/at standard
	DC port	DC 12V/2A (max)
	USB port	DC 5V/10W (max) Support QC2.0/QC3.0/Samsung/Huawei/MTK protocol, Apple 2.4A standard 5V output
Power input	Charging port	USB type-C, DC12V/1.5A Power adapter (included by default)
PD port	PoE detection	Used to detect 1236 power mode or 4578 power mode
Data access	RJ45	1*10/100Mbps Adaptive network port
	WIFI	2.4G 150Mbps,802.11b/g/n
	WIFI access	Recommended <6
Battery	Category	Lithium Ion Battery
	Maximum capacity	4500mAh (max)
	Voltage	14.8V
	Maximum charging current	1300mA
Reliability	Working temperature	-5℃- 50℃
	Working humidity	10%-90% RH
	Storage temperature	-40℃-80℃
	Storage humidity	10%-95% RH
Physical property	Size :(length *width * height)	163*85.4*28mm
	Material	ABS
	Weight	345g
Electrostatic level		Level 3
Certificate		CE
		Battery test report
		Material Safety Data Sheet (MSDS)
		Air transport condition identification report

Products are subject to change without prior notice.